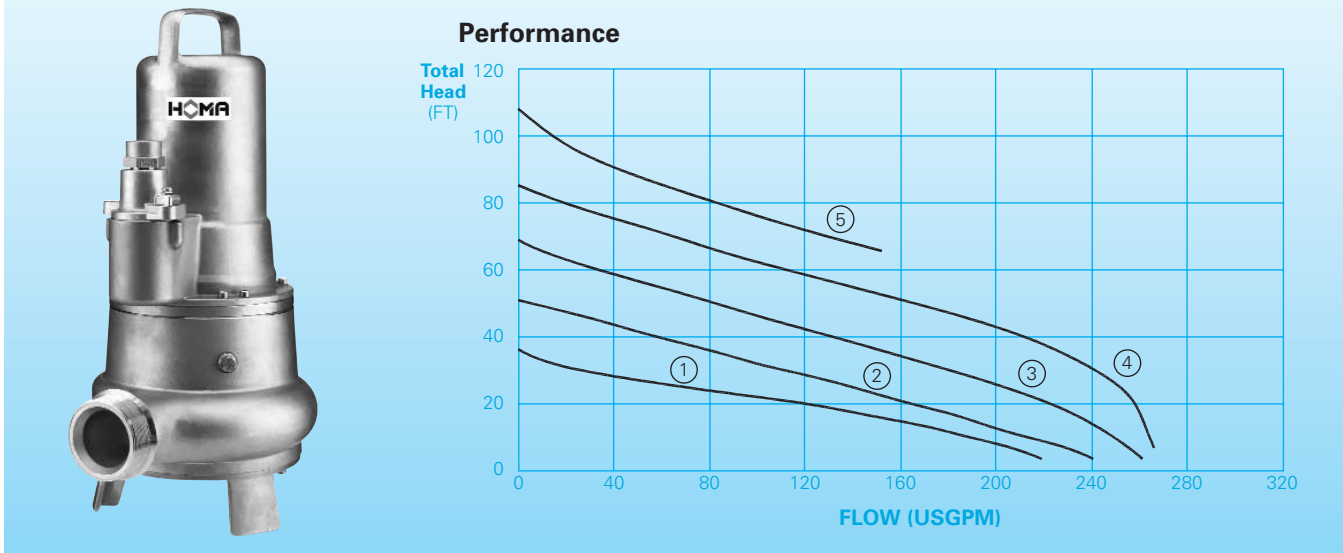


Stainless Steel Submersible Drainage Pumps

Single Vane Impeller with 2" Solid Size

3 " Discharge

CTP 53 M



Application

HOMA CTP 53 stainless steel submersible drainage pumps are suitable for pumping corrosive, abrasive or chemically aggressive liquids^{*)}, waste water or sewage and chemicals^{*)} containing soft solids up to 2" diameter. They are used in various domestic, industrial or municipal applications.

Typical Fluids Handled are:

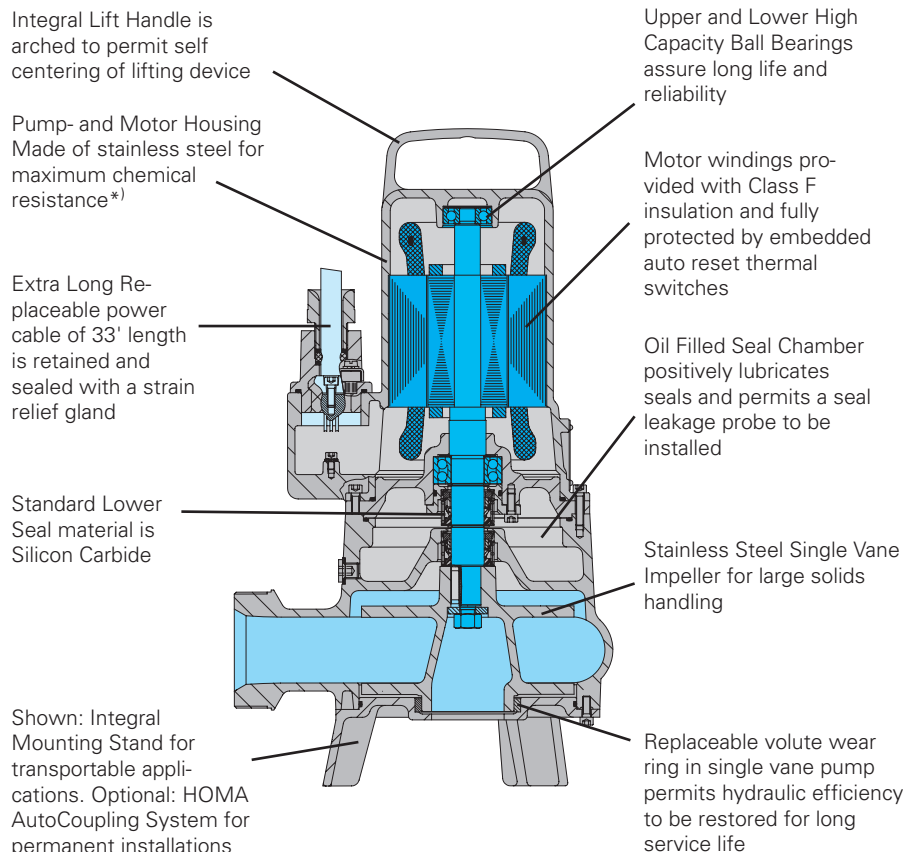
- Drainage water
- Effluent with soft solids
- Chemically aggressive liquids*
- Liquids to 140 F can be handled intermittently*

CTP 50 Series Pumps are typically used in:

- Residential and Commercial Sewage
- Industrial Wastewater
- Effluent Distribution Systems
- Agricultural Wastewater
- Pond or Lake Water
- Processing Plants
- Optional Factory Mutual (FM) label for Class I, Div 1 EX construction.

* According to specific chemical resistance of used materials

Features

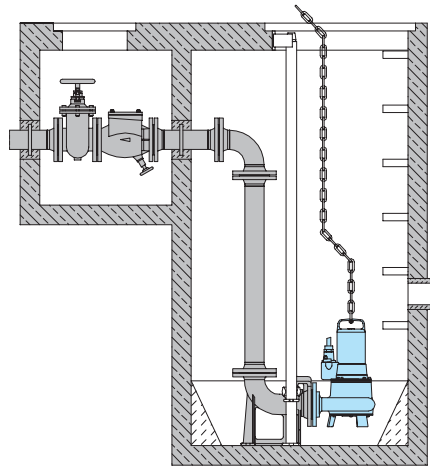


Motor Construction

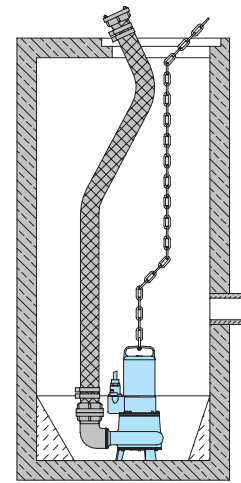
Motor Type:
 Enclosed Submersible
NEMA Insulation Code:
 Class F
Service Factor:
 1.15
NEMA Design Type:
 B
Standard Cable Length:
 33 ft
Available Motor Voltages:
 1 Phase: 200 V, 230 V
 3 Phase: 200 V, 230 V, 380 V,
 460 V, 575 V
Optional Explosion Proof
 construction:
 Factory Mutual approved for Class I,
 Div. 1, Group C & D.

Installations

Wet pit with autocoupling



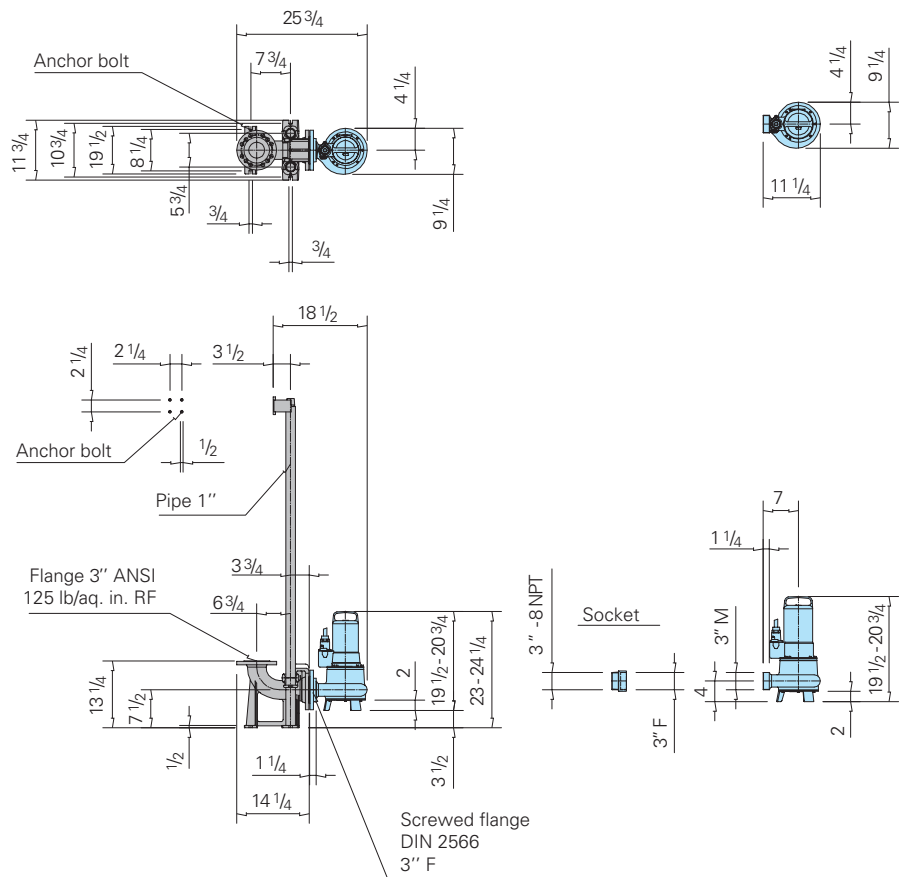
Basestand



Materials

Motor Housing, Volute and Impeller
 Stainless Steel AISI 316
Mechanical Seals – Impeller side
 Silicon Carbide vs Silicon Carbide,
 Viton
Shaft Seal – Motor side
 Mechanical Seal
 Silicon Carbide vs Silicon Carbide,
 Viton
O-Rings: FPM (Viton)
Upper Bearing:
 Deep groove Ball Bearing
Lower Bearing:
 Double row angular Ball Bearing
Power Cable Protective Hose:
 Polyolefine
Shaft: AISI 430 F
Fasteners: AISI 304 SS

Dimensions (inches) (Tolerance +/- 1/4")



Technical Data

Curve No.	Pump Type	Rated B.H.P.	Phase	Voltage (V)	Full Load Amps	Speed (rpm)	Weight (LBS)	NEMA code
1	CTP53M20/4/3	1.6	3	230/380/460	5.2/3.2/2.6	1750	86	H
2	CTP53M29/2/3	2.3	3	230/380/460	7.0/4.2/3.5	3450	86	G
3	CTP53M38/2/3	3.0	3	230/380/460	8.2/5.0/4.1	3450	86	G
4	CTP53M54L/2/3	4.3	3	230/380/460	11.4/6.9/5.7	3450	112	F
5	CTP53M54H/2/3	4.3	3	230/380/460	11.4/6.9/5.7	3450	112	F